

## **WINNERS ANNOUNCED FOR THE DIRECTOR'S CREATIVITY SHOWCASE**

Debuting in 1979, the Director’s Creativity Showcase has become a favorite with consumers, families, and staff. The annual art contest is an opportunity for individuals served by the Missouri Department of Mental Health (DMH) to display their creative talents. The artwork is created not only for the Showcase, but is sometimes used as a means of therapy. This therapy provides an outlet for the artist to express his or her feelings – feelings they may not be able to verbally communicate. The Showcase has encouraged many individuals to try something they may previously have never considered possible, only to find they have a true creative talent.

All entries are judged in one of the following categories: Mental Illness (MI), Developmental Disabilities (DD), Substance Use Disorders (SUD), Professional (Best of Show) and Photography. Cash awards are provided for each of the categories. In addition, opportunities are provided for the artist to sell their artwork.

Listed below are the award winners, by category:

### **MI (Mental Illness)**

<b>Placement</b>	<b>Artwork Title</b>	<b>Provider Organization</b>	<b>Provider Organization’s City</b>
<b>1st</b>	Tribute to Nightwatch	SORTS	Farmington
<b>2nd</b>	Sun-Lite Waterfall	SORTS	Farmington
<b>3rd</b>	Inside Out	New Horizons	Columbia
<b>4th</b>	Joker Gone Batty	Easy Living, Inc	Bolivar
<b>5th</b>	My Weapons	SORTS	Farmington

### **DD (Developmental Disabilities)**

<b>Placement</b>	<b>Artwork Title</b>	<b>Provider Organization</b>	<b>Provider Organization’s City</b>
<b>1st</b>	Hiding Cat	Imagine That!	Kansas City
<b>2nd</b>	Our Secret Spot	Unknown	Willard
<b>3rd</b>	The New Jerusalem	Nova Center of the Ozarks	Springfield
<b>4th</b>	Glow in the Darkroom Painting	Unlimited Opportunity	Boonville
<b>5th</b>	Wonder Woman	CC Links	Ozark

## SUD (Substance Use Disorders)

Placement	Artwork Title	Provider Organization	Provider Organization's City
1st	Out of Darkness	FCC Stapleton	Hayti
2nd	Blooming in Recovery	FCC Stapleton	Hayti
3rd	Christmas 1985	TMC Recovery Health Services	Kansas City
4th	Pull the Trigger	Preferred Family Health Care	St. Charles
5th	Untitled	Southeast MO Mental Health	Farmington

## PROFESSIONAL

Placement	Artwork Title	Provider Organization	Provider Organization's City
Best of Show	Untitled	SORTS	Farmington

## Photography

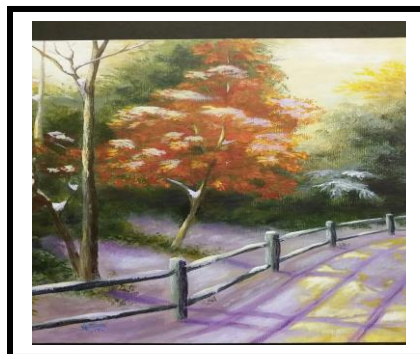
Placement	Artwork Title	Provider Organization	Provider Organization's City
1st	Don't Get High, Get Heels	FCC Stapleton	Hayti
2nd	Storm Coming	BJC Behavioral Health	Bridgeton
3rd	Untitled	Burrell Behavioral Health	Columbia

### PUBLIC EDUCATION & AWARENESS:

Several art pieces will be selected for the annual *Traveling Showcase*, which is an opportunity for the general public to view the art display. The artwork will be exhibited at multiple venues across Missouri between August and December. The Showcase helps to acquaint the general public with the talents and abilities of individuals living with mental illnesses, developmental disabilities, and in recovery for substance use disorders.

### CATEGORY: PROFESSIONAL

Best of Show: *Untitled*



**CATEGORY: MENTAL ILLNESS (MI)**

**1<sup>st</sup> Place:** *Tribute to Nightwatch*



**2<sup>nd</sup> Place:** *Sun-Lite Waterfall*



**3<sup>rd</sup> Place:** *Inside Out*



**4<sup>th</sup> Place:** *Joker Gone Batty*



**5<sup>th</sup> Place:** *My Weapons*



**CATEGORY: DEVELOPMENTAL DISABILITIES (DD)**

**1<sup>st</sup> Place:** *Hiding Cat*



**2<sup>nd</sup> Place:** *Our Secret Spot*



**3<sup>rd</sup> Place:** *The New Jerusalem*



**4<sup>th</sup> Place:** *Glow in the Darkroom Painting*



**5<sup>th</sup> Place:** *Wonder Woman*



**CATEGORY: SUBSTANCE USE DISORDERS (SUD)**

**1<sup>st</sup> Place:** *Out of Darkness*



**2<sup>nd</sup> Place:** *Blooming in Recovery*



**3<sup>rd</sup> Place:** *Christmas 1985*



**4<sup>th</sup> Place:** *Pull the Trigger*



**5<sup>th</sup> Place:** *Untitled*



**CATEGORY: PHOTOGRAPHY**

**1<sup>st</sup> Place:** *Don't Get High, Get Heels*



**2<sup>nd</sup> Place:** *Storm Coming*



**3<sup>rd</sup> Place:** *Untitled*

